

Let's create a clear path to care: GPSC and the Patient Medical Home

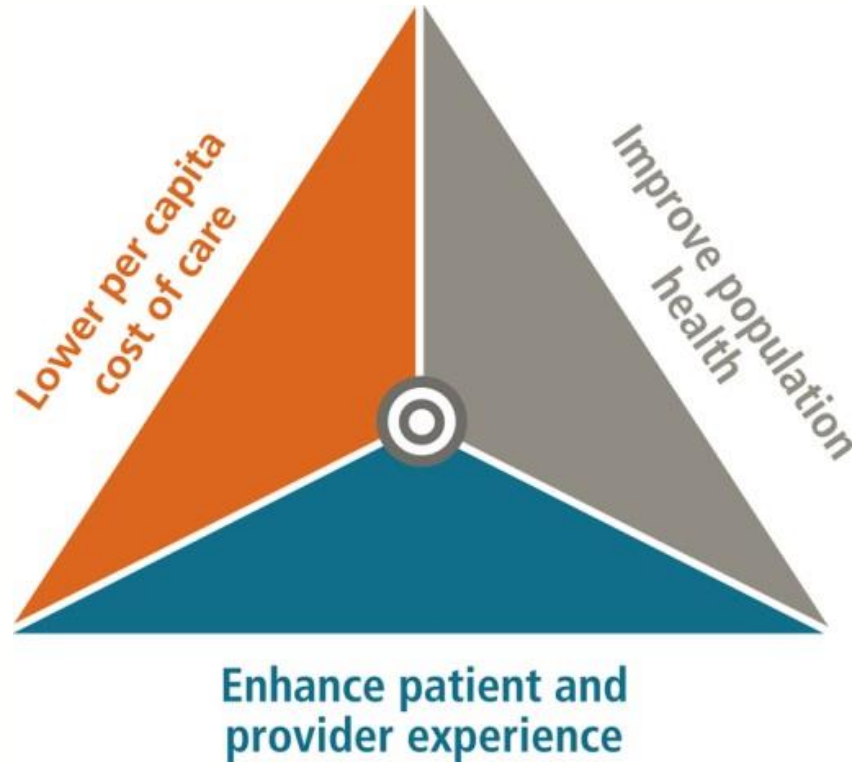
Dr Brenda Hefford, Doctors of BC

Presentation to BCHIMPS

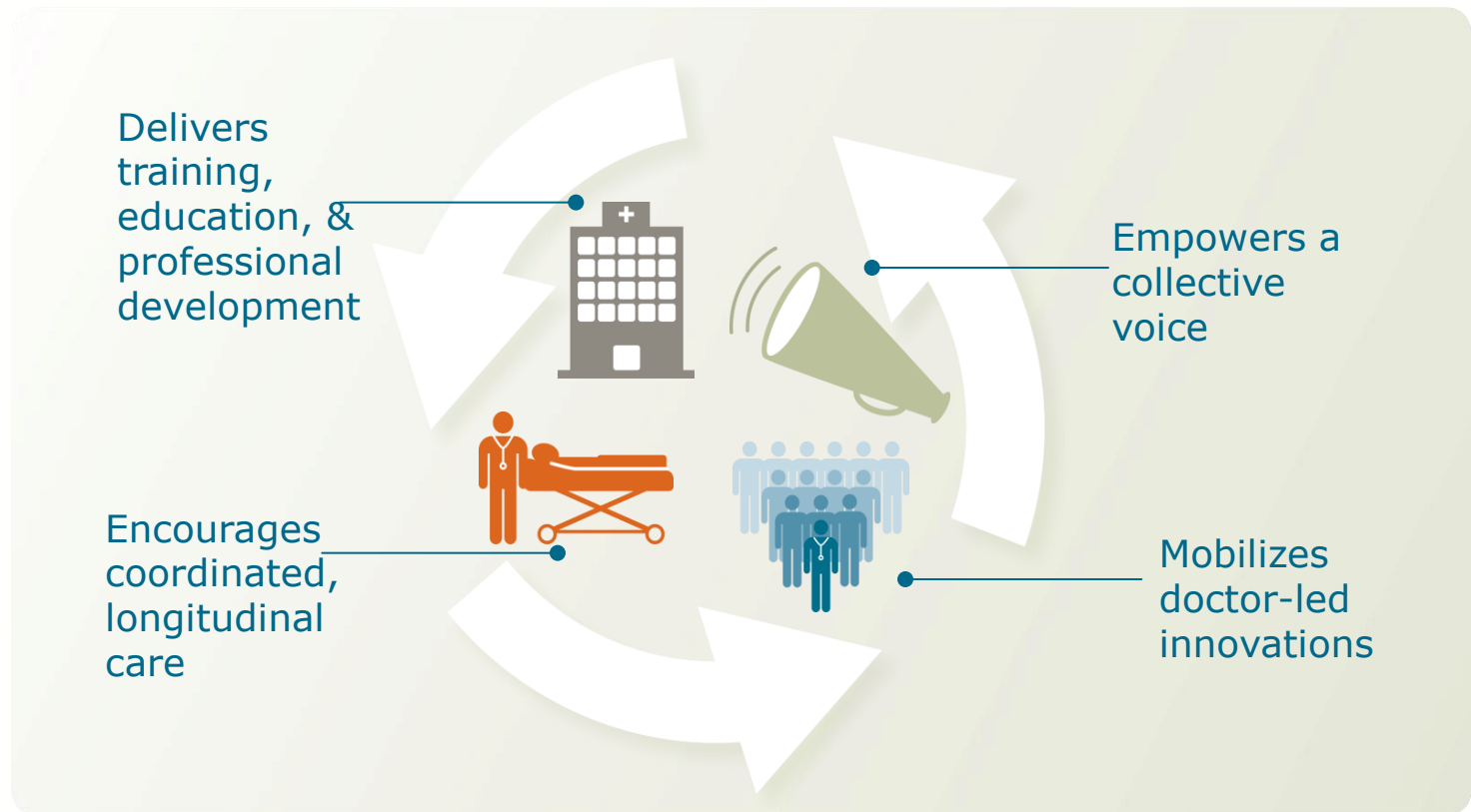
February 24, 2017



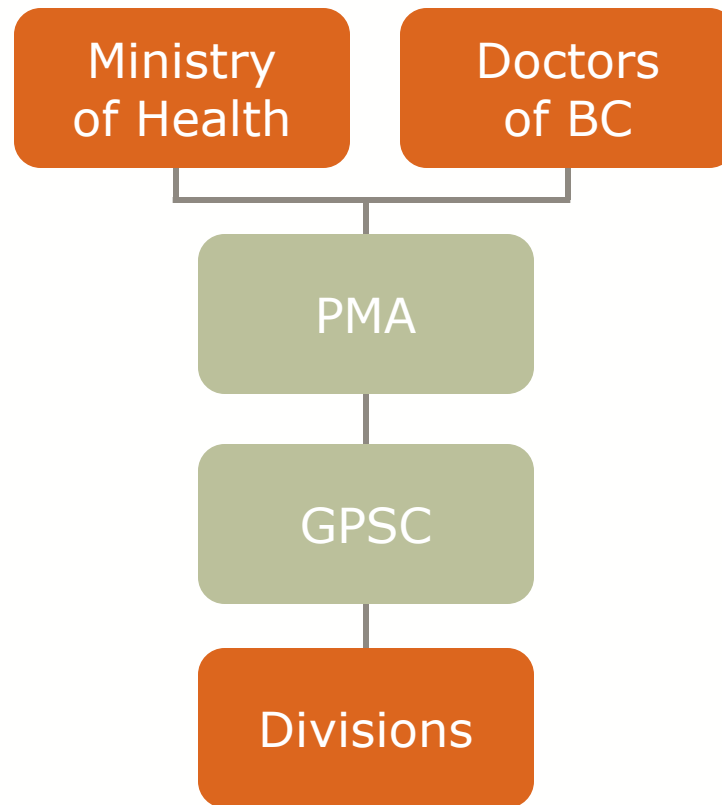
Triple Aim



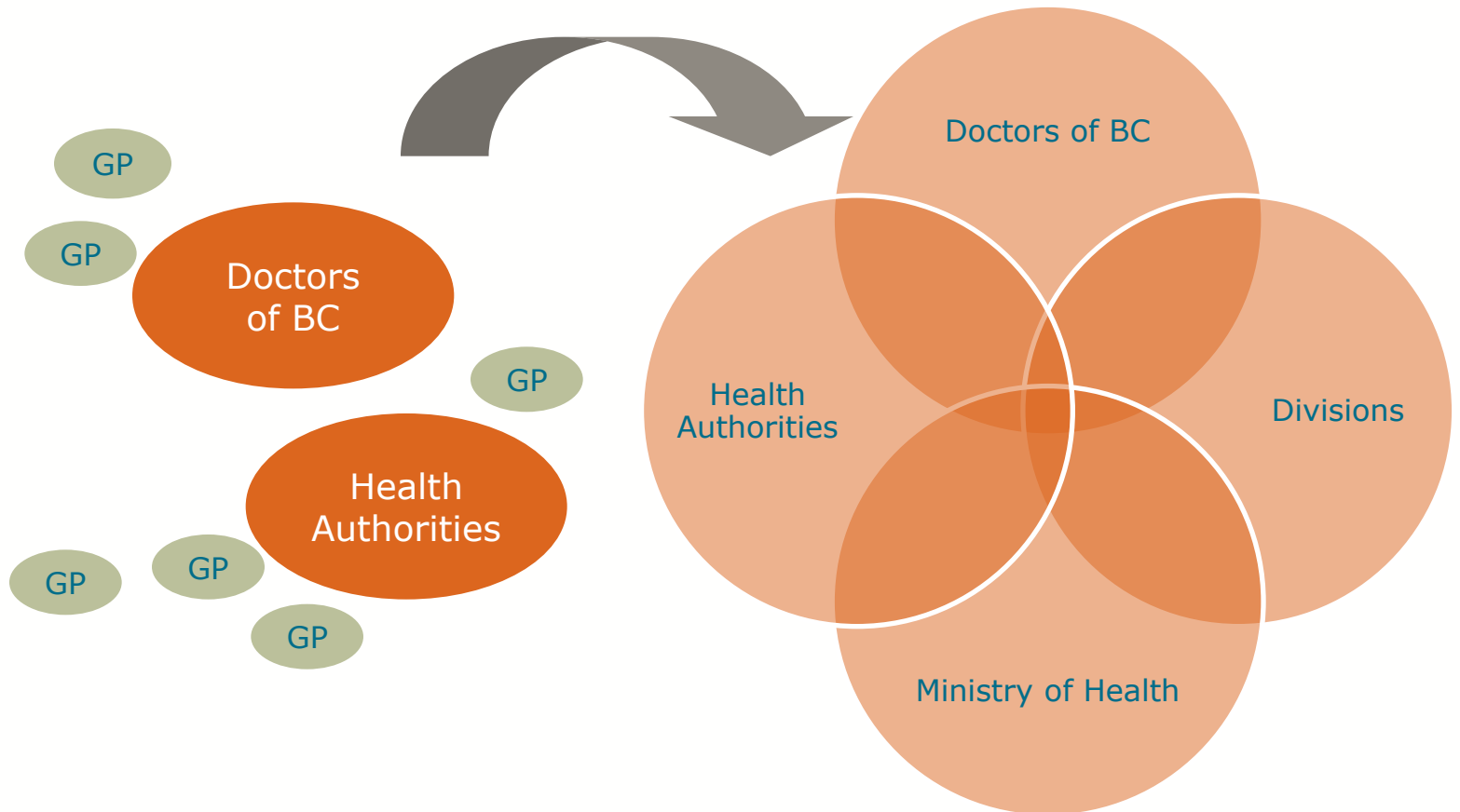
Finding solutions to support & sustain full-service family practice in BC



Connecting doctors: Divisions of Family Practice



A new way of working together

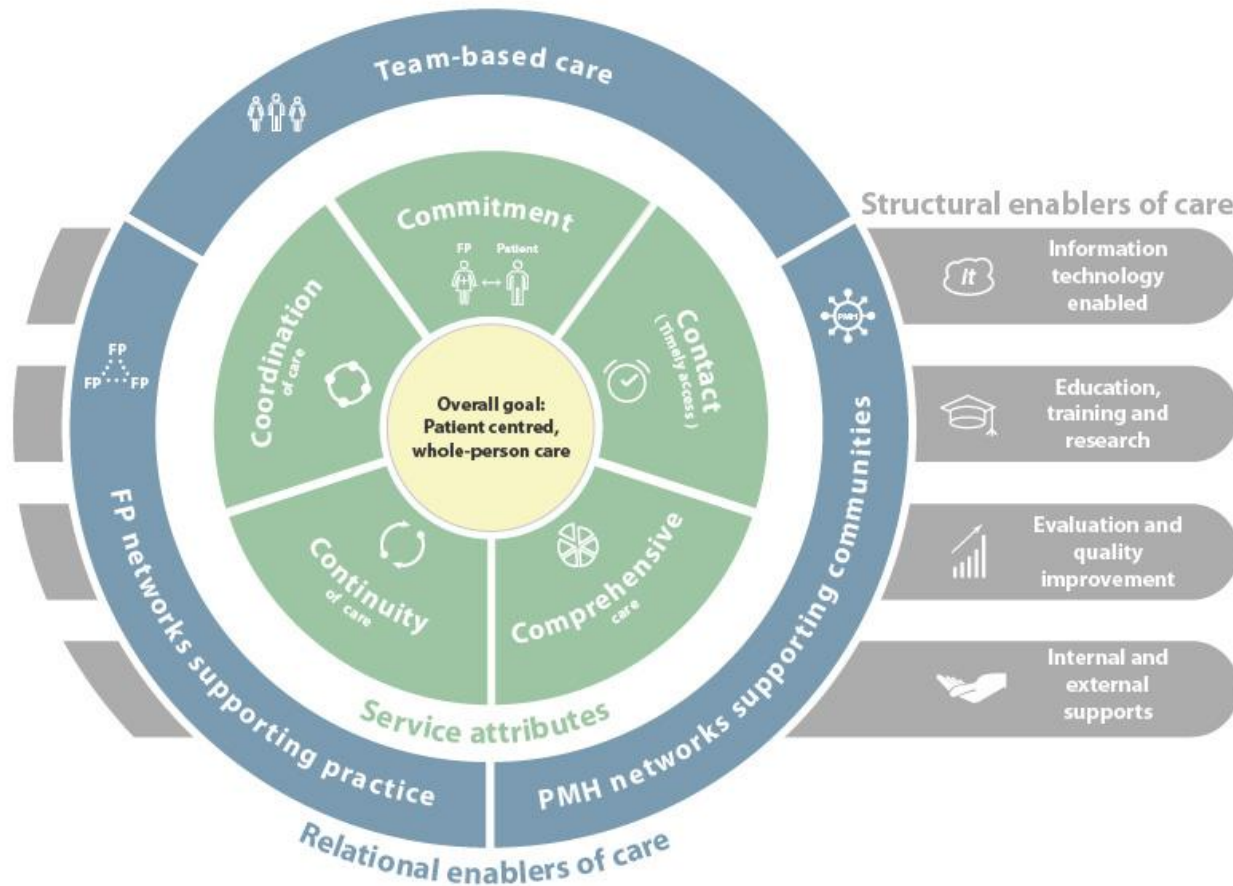


Co-Creating the Future of Integrated Health Care

GPSC vision

- To enable access to quality primary health care that effectively meets the needs of patients and populations in BC, using the patient medical home to form the foundation for care delivery within a broader, integrated system of primary and community care.

BC Patient Medical Home



GPSC PMH goals



Access



Capacity

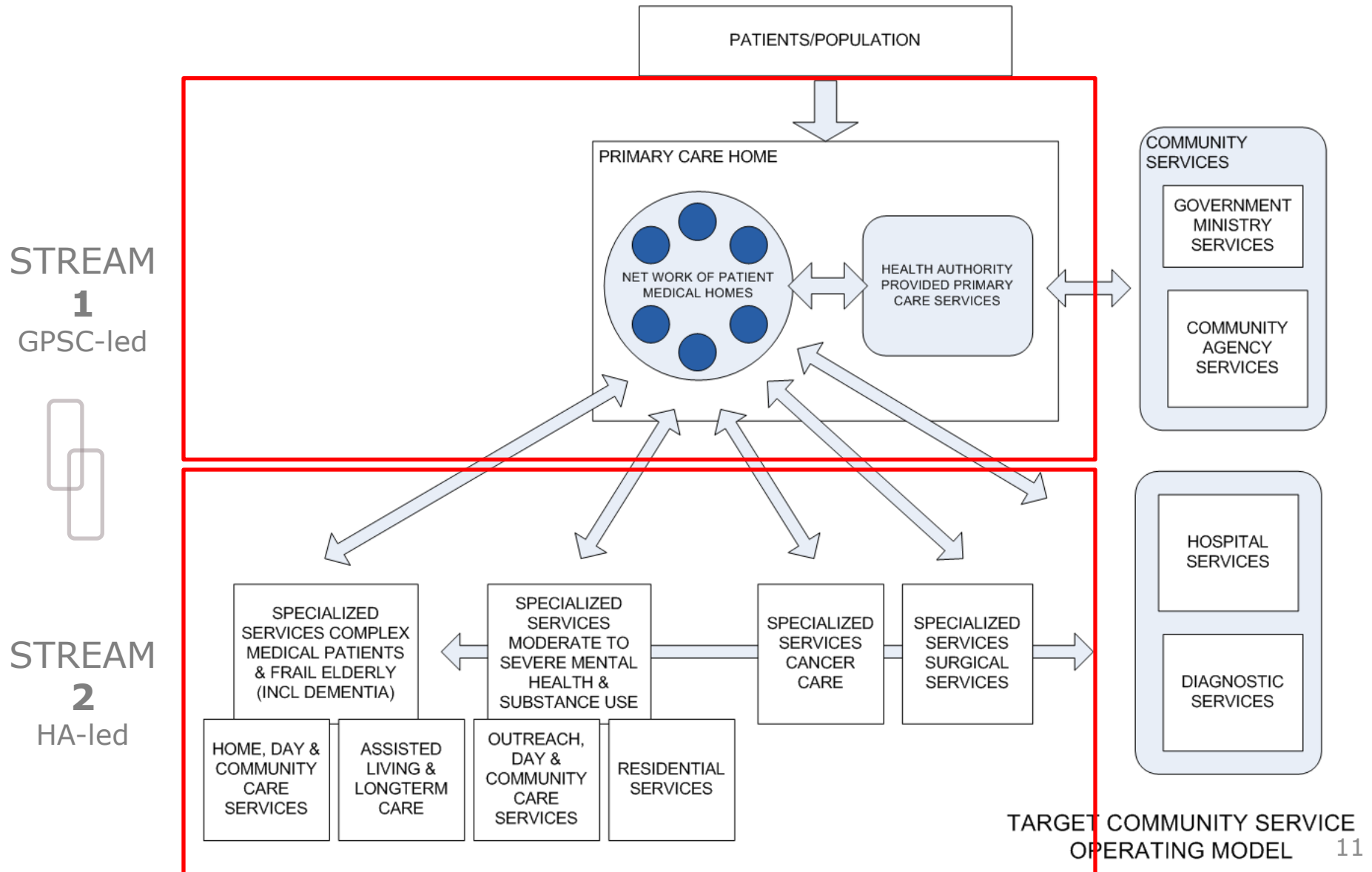


Linkages



Work
environment

Integrated System of Primary and Community Care



Discussion questions

1. What community, regional and/or provincial level conversations need to happen to enable this work?
2. What IM/IT enablers do you see as a priority?
3. What key message(s) do you see as most important to increase understanding of the PMH?

Thank you

E gpsc@doctorsofbc.ca | W www.gpscbc.ca